

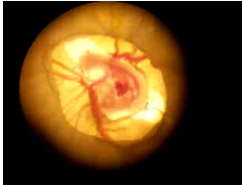


# Life Cycle Of A Chicken

## From Egg To Farm

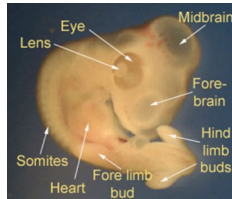


Days 1-5



Muscle & eyes develop

Days 5-8



Feather buds appear  
Leg bones form

Days 9-11



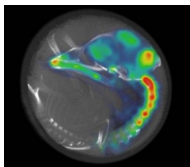
Eyelids develop  
Bones harden

Days 12-15



Skull hardens  
Beak is now firm

Days 19-21



Lungs develop

Hatch Day



It starts with just a little crack

Hatch Day



Hatching may take 24 hours the chicks get tired and needs to rest

Hatch Day



The chick is almost done

All done



The chick will stay in the incubator for 24 hours

Brooder box



The chicks will be kept in a brooder box to keep them warm until they go to the farm

Life on the farm



A chicken can be a laying hen. She will produce eggs for people to eat

Life on the farm



A chicken can also be a broiler. This type of chicken is raised to make chicken nuggets, chicken fingers, fried chicken too